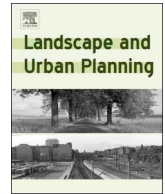




ELSEVIER

Contents lists available at ScienceDirect

Landscape and Urban Planning

journal homepage: www.elsevier.com/locate/landurbplan

An evaluation of species distribution models to estimate tree diversity at genus level in a heterogeneous urban-rural landscape

Michiel Stas^{a,b,*}, Raf Aerts^{a,c,d,e,f}, Marijke Hendrickx^f, Nicolas Dendoncker^{g,h},
 Sebastien Dujardin^{a,g,h}, Catherine Linard^{g,h}, Tim Nawrot^{e,i}, An Van Nieuwenhuysse^{d,i,j},
 Jean-Marie Aerts^b, Jos Van Orshoven^a, Ben Somers^a

^a Division Forest, Nature and Landscape, Department Earth and Environmental Sciences, KU Leuven, Celestijnenlaan 200E-2411, BE-3001 Leuven, Belgium

^b Measure, Model & Manage Bioresponses (M3-BIORES), Division Animal and Human Health Engineering, Department of Biosystems (BIOSYST), KU Leuven, Kasteelpark Arenberg 30-2472, B-3001 Leuven, Belgium

^c Risk and Health Impact Assessment, Sciensano (Belgian Institute of Health), J. Wytsmanstraat 14, B-1050 Brussels, Belgium

^d Division Ecology, Evolution and Biodiversity Conservation, KU Leuven, Kasteelpark Arenberg 31-3245, BE-3001 Leuven, Belgium

^e Center for Environmental Sciences, Hasselt University, Campus Diepenbeek, Agoralaan Gebouw D, B-3590 Hasselt, Belgium

^f Mycology and Aerobiology, Sciensano (Belgian Institute of Health), J. Wytsmanstraat 14, B-1050 Brussels, Belgium

^g Department of Geography, University of Namur, Rue de Bruxelles 61, B-5000 Namur, Belgium

^h Institute for Life, Earth and Environment (ILEE), University of Namur, Rue de Bruxelles 61, B-5000 Namur, Belgium

ⁱ Centre Environment and Health, Department of Public Health and Primary Care, KU Leuven, Kapucijnenvoer 35 blok d box 7001, B-3000 Leuven, Belgium

^j Department of Health Protection, Laboratoire national de santé (LNS), 1, Rue Louis Rech, L-3555 Dudelange, Luxembourg

ABSTRACT

Trees provide ecosystem services that improve the environment and human health. The magnitude of these improvements may be related to tree diversity within green spaces, yet spatially explicit diversity data necessary to investigate such associations are often missing. Here, we evaluate two methods to model tree diversity at genus level based on environmental covariates and presence point data. We aimed to identify the drivers and suitable methods for urban and rural tree diversity models in the heterogeneous region of Flanders, Belgium.

We stratified our research area into dominantly rural and dominantly urban areas and developed distribution models for 13 tree genera for both strata as well as for the area as a whole. Occurrence data were obtained from an open-access presence-only database of validated observations of vascular plants. These occurrence data were combined with environmental covariates in MaxEnt models. Tree diversity was modelled by adding up the individual species distribution models.

Models in the dominantly rural areas were driven by soil characteristics (soil texture and drainage class). Models in the dominantly urban areas were driven by environmental covariates explaining urban heterogeneity. Nevertheless, the stratification into urban and rural did not contribute to a higher model quality. Generic tree diversity estimates were better when presences derived from distribution models were simply added up (binary stacking, True Positive Rate of 0.903). The application of macro-ecological constraints resulted in an underestimation of generic tree diversity (probability stacking, True Positive Rate of 0.533). We conclude that summing presences derived from species distribution models (binary stacking) is a suitable approach to increase knowledge on regional diversity.

1. Introduction

Trees in urban environments deliver important ecosystem services. Street trees help to cool cities (Konarska et al., 2016; Scholz, Hof, & Schmitt, 2018), partially mitigating the urban heat island effect and human heat stress (Lee, Mayer, & Chen, 2016). Trees can also remove particulate matter from the atmosphere (Scholz et al., 2018; Selmi et al., 2016). Through climate regulation, air pollution mitigation and

aesthetic and cultural values, trees contribute to better human well-being (Salmond et al., 2016). Individual trees in the city also contribute to indirect nature experiences, which benefits human health (Cox et al., 2019). The ecosystem services delivered by trees are tree species specific (Donovan, Stewart, Owen, MacKenzie, & Hewitt, 2005). Increasing biodiversity is expected to result in better ecosystem functioning and may yield more stable ecosystem services through time (Cardinale et al., 2012).

* Corresponding author at: Division Forest, Nature and Landscape, Department Earth and Environmental Sciences, KU Leuven, Celestijnenlaan 200E-2411, BE-3001 Leuven, Belgium.

E-mail addresses: michiel.stas@kuleuven.be (M. Stas), raf.aerts@kuleuven.be, raf.aerts@sciensano.be (R. Aerts), marijke.hendrickx@sciensano.be (M. Hendrickx), nicolas.dendoncker@unamur.be (N. Dendoncker), sebastien.dujardin@unamur.be (S. Dujardin), catherine.linard@unamur.be (C. Linard), tim.nawrot@kuleuven.be (T. Nawrot), an.vannieuwenhuysse@kuleuven.be, an.vannieuwenhuysse@lms.etat.lu (A. Van Nieuwenhuysse), jean-marie.aerts@kuleuven.be (J.-M. Aerts), jos.vanorshoven@kuleuven.be (J. Van Orshoven), ben.somers@kuleuven.be (B. Somers).

<https://doi.org/10.1016/j.landurbplan.2020.103770>

Received 31 May 2019; Received in revised form 31 January 2020; Accepted 3 February 2020

0169-2046/ © 2020 Elsevier B.V. All rights reserved.

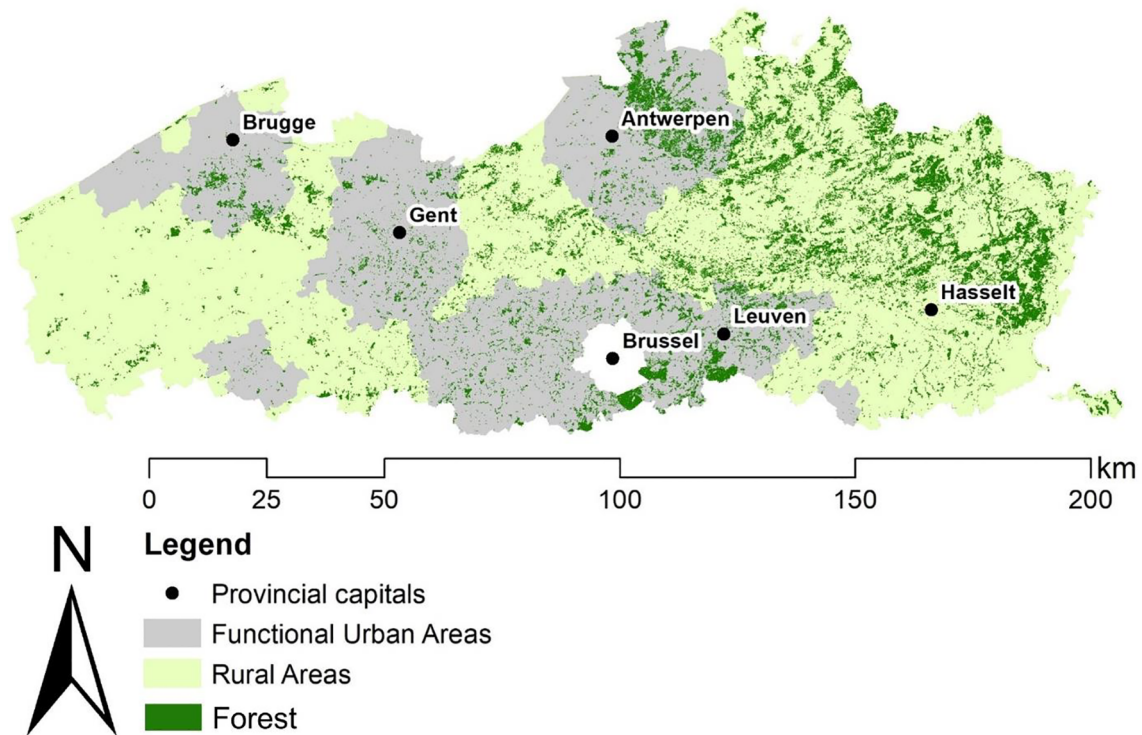


Fig. 1. Stratification of the region of Flanders into functional urban areas and rural areas according to the Urban Audit of Eurostat (2018). The provincial capital cities are labeled and the forest cover in the region is visualized.

Tree diversity has been studied at genus level before (Hoover, Kumar, James, Liesz, & Laituri, 2017; Hope et al., 2003) and might become more popular with increasing availability of observations from citizen science (Dobbs, Hernández, de la Barrera, Miranda, & Paecke, 2018). Observations of trees through citizen science initiatives have been found to be more accurate at genus level than at species level (Roman et al., 2017). Plant genus-level diversity is strongly linked to plant species-level diversity (O'Brien, Whittaker, & Field, 1998). Additionally, interactions with host plants often occur at genus level and therefore genus level diversity is also relevant for insect diversity (Kemp & Ellis, 2017), or ectomycorrhizal fungal diversity (Gao et al., 2013). Thomsen, Bühler, and Kristoffersen (2016) emphasize that a healthy urban tree population requires a high generic diversity. Modelling tree diversity at genus level is thus of high value because it encompasses more reliable observation data and allows for diverse applications.

Genus-level presence-only data can be used in species distribution models (SDMs). SDMs correlate species observations and environmental covariates to predict habitat suitability (Elith & Graham, 2006). Applications of SDMs are manifold: identifying species distributions, studying impact of climate and land use change scenarios (Dyderski, Paž, Frelich, & Jagodziński, 2018) and identifying areas of interest for conservation (McCune, 2016). Applications of SDMs in urbanized areas are not common (Della Rocca, Bogliani, & Milanese, 2017), yet they have been successfully applied in urban green spaces (Milanovich, Peterman, Barrett, & Hopton, 2012) and human-dominated landscapes (McCune, 2016).

Species richness can be modelled by stacking individual SDMs on top of one another to yield a total richness. Stacking of SDMs is most commonly done after thresholding the continuous probability output of the individual SDMs, a method known as binary stacking (Calabrese, Certain, Kraan, & Dormann, 2014). Nevertheless, discretizing continuous probabilities using fixed thresholds (for example considering all cases with a modelled probability of $p > 0.55$ as being present) is generally discouraged (Merow, Smith, & Silander, 2013). Instead, species-specific threshold rules can be applied (Cao et al., 2013). Still, the literature suggests that binary stacking tends to overestimate species richness because biotic limitations are not accounted for (Calabrese

et al., 2014; Gavish et al., 2017; Guisan & Rahbek, 2011). Nonetheless, combining binary SDMs is the most straightforward method to create species richness maps (Trotta-Moreu & Lobo, 2010). Combining continuous probability data, which is called probability stacking, is an alternative stacking approach (Calabrese et al., 2014), although interpretations are less straightforward. Guisan and Rahbek (2011) have proposed a framework for spatially explicit species assemblage modelling (SESAM). In the SESAM framework, a macro-ecological model limits the number of species that can co-occur in one cell. One way of defining the macro-ecological constraint is by stacking the probabilities of SDMs (probability stacking). D'Amen et al. (2015) reduced overestimation by applying probability stacking successfully in the Alps of western Switzerland at a fine spatial resolution.

In this study, we test a stratified approach, in which we run separate SDMs for rural and urban areas in a mosaic landscape, to model tree diversity at genus level. We evaluate which environmental covariates drive urban and rural models. First, we hypothesized that different environmental covariates drive urban and rural models. We expect that soil nutrients and soil moisture determine vegetation in rural areas, because this vegetation resembles the potential natural vegetation more closely (Walter & Meier, 2017). For urban areas we expect an anthropogenic influence on the vegetation composition (Bourne & Conway, 2017). Second, we hypothesized that the application of a macro-ecological constraint to take biotic interactions into account would improve models for rural areas, but not for urban areas. We expected that biotic interactions are more relevant in rural areas (D'Amen et al., 2015). Third, we hypothesized that binary stacking performs sufficiently well in urban areas. We expected that biotic interactions are less relevant in urban areas because of human intervention.

2. Materials and methods

2.1. Study area and stratification

Flanders is the northernmost of the three administrative regions of Belgium and has an area of 13,522 km² and a population density of 482

inhabitants per km². The area has a north–south soil gradient of decreasing fraction of sand and increasing fraction of silt. The climate according to Köppen is a maritime temperate climate (Cfb) (Peel, Finlayson, & McMahon, 2007). The Organization for Economic Co-operation and Development (OECD) considers Flanders entirely as urbanized (Vervoort, 2016). Nevertheless, based on the Urban Audit of 2018 published by Eurostat, core cities and functional urban areas (FUAs) are present and were delineated for Flanders. The delineation is used to distinguish dominantly urban areas from more rural areas in Flanders (Fig. 1). FUAs define a metropolitan area beyond the geographical city boundaries, taking into account demographic, economic and environmental factors (Khalili, van den Besselaar, & de Graaf, 2018). In Flanders, the FUAs are located around the capitals of each province, except for Hasselt (Fig. 1). Hasselt is a provincial capital located in the east of the region where forest cover is higher. As only 10.6% of the study area consists of forest (De Keersmaecker et al., 2015), other (urban) green spaces are of high importance for biodiversity (Aronson et al., 2017; Lepczyk et al., 2017). Green space is most commonly defined as a non-built area covered with vegetation (Taylor & Hochuli, 2017). We will focus on vegetated areas containing woody species. The Belgian and Luxemburg Institute for Floristics (IFBL) developed a regular grid of 4 × 4 km squares further divided into 1 × 1 km squares covering Belgium and Luxemburg. This grid is used as a reference for mapping species distributions (Van Rompaey, 1943). In this study the 1 × 1 km IFBL grid is used to mask observation data and environmental covariates.

2.2. Species distribution modelling

Species distribution models (SDMs) estimate the relationship between recorded occurrences at sites (samples) and the environmental and/or spatial characteristics of those sites (environmental covariates) (Elith et al., 2011). This relationship is then used to predict occurrences elsewhere. In the stratified approach, separate SDMs are run for the urban and rural strata. Subsequently, the urban and rural data are combined in an integrated approach to form a model that covers the whole region of Flanders. The models are validated with independent field data to evaluate their utility in the urban and rural strata. The workflow for the integrated approach, which is parallel for the stratified approach, is visualized in Fig. 2 and explained in the following sections.

2.2.1. Occurrence data

The occurrence data of thirteen tree genera were included in the study: *Aesculus* (horse chestnut), *Alnus* (alder), *Betula* (birch), *Carpinus* (hornbeam), *Corylus* (hazel), *Fagus* (beech), *Fraxinus* (ash), *Juglans* (walnut), *Platanus* (plane), *Populus* (poplar), *Quercus* (oak), *Salix* (willow) and *Tilia* (linden). Presence-records of these genera were extracted from Florabank1 (Van Landuyt, Vanhecke, & Brosens, 2011) available on GBIF.org. The Florabank is an open-access presence-only database of validated observations of vascular plants, from checklists, literature and herbarium specimen information. The observations are georeferenced and attributed to the centers of 14,317 1 km × 1 km IFBL grid cells (Van Landuyt et al., 2011).

2.2.2. Environmental covariates

Soil texture class, soil drainage class, mean lowest and highest groundwater table depth, land cover type and habitat type were used as environmental covariates. In Belgium, natural plant communities are primarily determined by variation in soil nutrient content and soil moisture (Cornelis, Hermy, Roelandt, De Keersmaecker, & Kris, 2009). Therefore, soil texture and drainage class were extracted as explanatory categorical soil variables from the Belgian soil map (Dondoyne, Vanierschot, Langohr, Ranst, & Deckers, 2014). This vector geodataset was first resampled to a raster, using the IFBL grid as the mask layer and the cell assignment type ‘maximum combined area’. The ‘maximum combined area’ rule selects the attribute value from the polygon with

the largest total area overlapping with the grid cell (ESRI, 2017). Mean highest and lowest groundwater tables data were obtained from a soil hydrology raster (ECOPLAN, 2014) and resampled to the IFBL grid.

Land cover data were obtained from one of the base layers in the ECOPLAN ecosystem services information system (ECOPLAN, 2014). The geodataset contains a basic land cover classification (the list of classes is available in Appendix 1). The grid with a spatial resolution of 5 m was resampled to the IFBL grid, retaining the land cover with the largest area in the grid cell.

Habitat data were obtained from the Biological Valuation Map (BVM), a geodataset of habitat types with attribute information on the ecological context and value of the delineated areas (Vriens, De Knijf, De Saeger, Guelinckx, Oosterlynck, Van Hove, & Paelinckx, 2011). The BVM contains information about heterogeneity of urban areas, such as the density and context of built-up areas, industrial areas and recreational areas. The classes of the BVM are listed in Appendix 1. The BVM is a vector geodataset and was resampled to the IFBL grid using ‘maximum combined area’ as the cell assignment type. Resampling and masking of the environmental geodatasets were performed in ArcGIS 10.5.1-software (ESRI, Redlands, CA, 2017).

2.2.3. Probability models

Probability models of the spatial distribution of each of the 13 genera were developed using MaxEnt version 3.3.3 k. MaxEnt is a machine-learning algorithm highly suitable to develop models from presence-only data (Elith & Graham, 2006; Phillips, Anderson, & Schapire, 2006). The algorithm is based on the principles of maximum entropy and finds an optimal probability distribution using a combination of occurrence data and environmental data (Elith et al., 2011). MaxEnt is known to perform well even when environmental covariates are linearly correlated (De Marco & Nóbrega, 2018). The logistic output of MaxEnt is an attempt at expressing the raw output as a probability of presence (Elith et al., 2011). A 10-fold cross validation was applied. Model performance was assessed with the area under the receiver operating characteristic curve (AUC) statistic, ranging between 0 and 1. When AUC values are higher than 0.5, the model performs better than a random distribution. For every genus, three models were developed: one using the entire dataset (integrated approach), then one for the rural and one for the urban areas (stratified approach). To evaluate the driving factors in these models, we determined the environmental covariates with the highest percentage of contribution to the model.

2.2.4. Binary stacking

We applied the ‘10 percentile training presence’ rule on the MaxEnt-output (Ficetola, Thuiller, & Padoa-Schioppa, 2009; Pearson, Raxworthy, Nakamura, & Townsend Peterson, 2006; Skowronek et al., 2017), for every genus and model approach separately, resulting in a threshold value above which 90% of the training samples are correctly classified. Thus, a unique threshold value is used for every genus to create a binary output (0 = absence, 1 = presence). Binary stacking is the process of adding up the individual binary models, resulting in a generic tree diversity varying from 0 to 13 genera.

2.2.5. Probability stacking

We summed the MaxEnt-probabilities per grid cell to define a cell-specific macro-ecological constraint (D’Amen et al., 2015), resulting in a possible generic tree diversity range between 1.96 and 8.76. To determine which genera occur in the constrained cells we used the ‘probability ranking’ rule. The genera are assigned to the cell according to decreasing order of probability of presence determined from the SDMs (2.2.3), until the cell-specific macro-ecological constraint is reached. Probability ranking, as described in the SESAM framework, is incorporated in the package ‘ecospat’ available for R (Di Cola et al., 2017) and was executed with R software 3.4.3 (R Core Team, 2017).

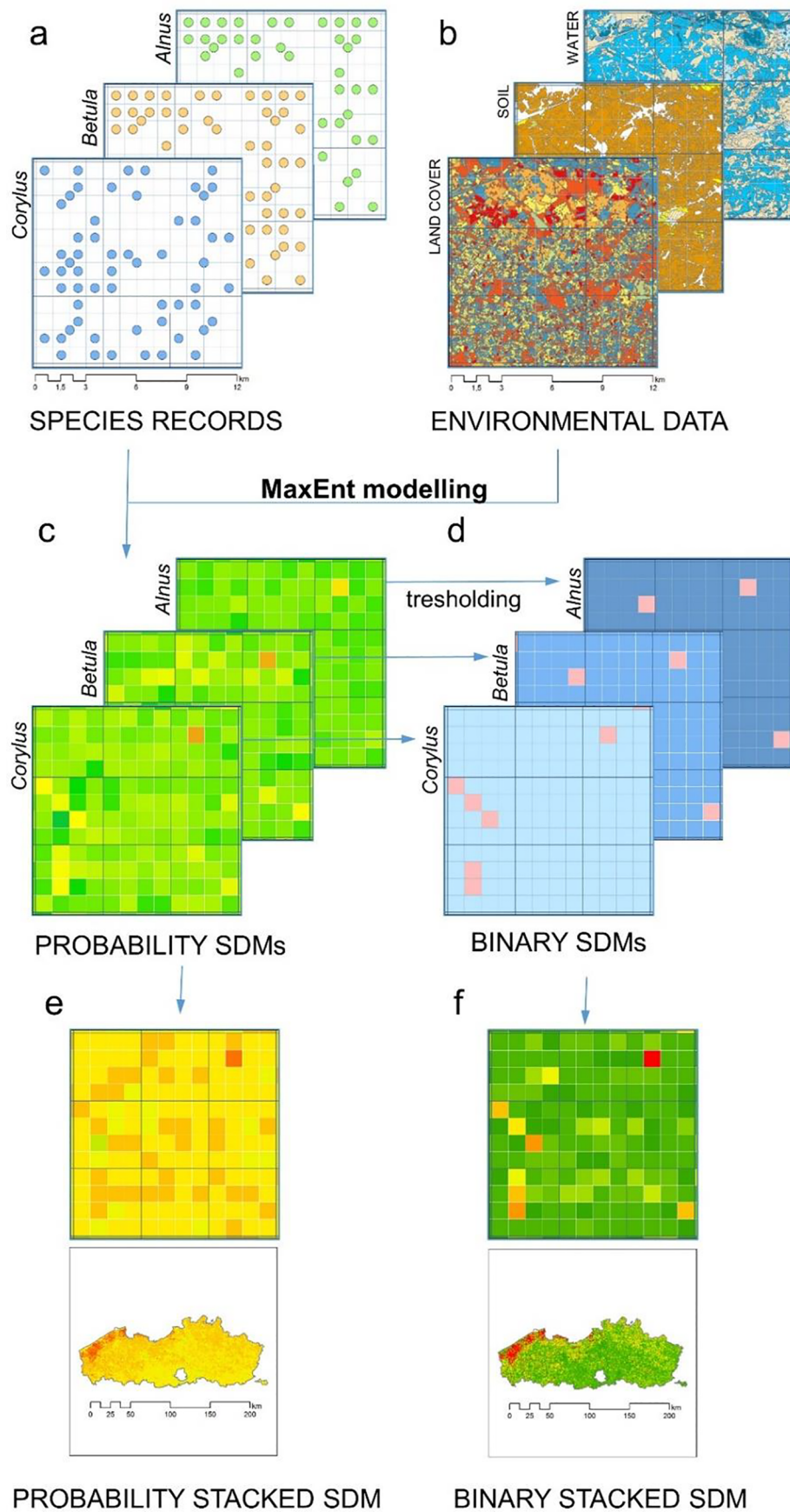


Fig. 2. Mapping tree diversity at the genus level from presence-only and environmental data. Presence-only data from Florabank (a) and environmental data from various sources (b) are combined in a species distribution model (SDM) using MaxEnt. The continuous output of MaxEnt, probability models (c), can be converted to presence-absence models (binary SDMs) by applying genus specific thresholds (d). Stacking the probability models and applying the probability ranking rule results in a probability stacked SDM (e). Aggregating the thresholded SDMs results in a binary stacked SDM (f).

2.3. Validation

The probability models (2.2.3) were cross-validated before they were stacked. In addition, the stacked models were validated with independent field data. The independent field data consisted of recordings of the genus's occurrence around 208 randomly selected point locations, with a search effort per point of ten minutes with two observers. The sampling protocol is derived from the timed-meander sampling protocol (Goff, Dawson, & Rochow, 1982), which is applied in various fields of ecology (Threlfall et al., 2017) and is favored because of its cost-effectiveness (Hamm, 2013). The 208 point locations are distributed over 130 IFBL cells. There are 87 rural cells and 43 urban cells. A genus is present in a cell if it is observed in at least one of the random point locations within the cell. The field data are assumed to provide the true condition that is compared to the predicted condition provided by the SDMs at genus level. True condition data and predicted condition data were compared in a confusion matrix, describing true positive (TP), true negative (TN), false positive (FP) and false negative (FN) outcomes. Based on the values in the confusion matrix, we evaluated the model performance by calculating the true positive rate (TPR). TPR is the number of true positives divided by the total of positive cases, the sum of true and false positives. The TPR informs simultaneously about the presences that are correctly predicted and about those that were incorrectly identified as positives. A TPR of 80% would indicate that 80% of the presences are true positives while 20% are false positives. However, in the present study, the false positives are not necessarily false as the species could have been missed during the validation field work. Therefore we focus on the true positives when interpreting the TPR. Additionally, the percentage of false negatives is included in the evaluation, because this percentage provides information on the underestimation of the stacking method. The higher the percentage of false negatives, the more the tree diversity at genus level is underestimated.

2.4. Compare model outcomes

To compare model outcomes we calculated average modelled tree diversity at genus level and 95% confidence intervals for binary stacked vs. probability stacked models and for integrated vs. stratified approaches and for urban vs. rural areas. We used the paired sample *t*-test (with a statistical cutoff value of 0.05) to test whether overall average modelled tree diversity at genus level differed between binary stacked and probability stacked models. We then used the paired sample *t*-test to test whether modelled generic tree diversity differed between integrated and stratified approaches within the binary stacked models, both for the entire dataset and for a dataset stratified in urban vs. rural areas.

3. Results

3.1. Probability models

The species distribution models outperformed the random spatial distribution (all AUC > 0.5; Table 1), for the stratified approach as well as the integrated approach. On average the AUC was 0.60 with a standard deviation of 0.007. The strength of the strongest predictor ranged from 32.7 to 85.7 percent of contribution (Table 1). For 11 out of 13 urban models, the strongest predictor was the Biological Valuation Map (BVM), containing information on urban habitat heterogeneity. For the rural model as well as the integrated model, we found that for some genera the strongest predictors were the soil variables texture class and drainage class.

3.2. Stacked species distribution models

For the integrated as well as the stratified approach binary stacking resulted in a generic tree diversity varying between 0 and 13.

Probability stacking resulted in a lower generic tree diversity between 2 and 9 (Fig. 3). Spatial differences in generic tree diversity between the integrated and the stratified approach were not strongly pronounced.

3.3. Validation

The binary stacking method, with an overall TPR of 0.90, performed better than the probability stacking method, with a considerably lower overall TPR of 0.52–0.53 (Table 2). Overall, the integrated and the stratified approach performed equally well. The binary stacking method had a lower percentage of false negatives (6.0–6.1%) than the probability stacking method (29.3–29.9%) (Table 3).

3.4. Comparison of model outcomes

3.4.1. Binary stacking vs. probability stacking

The overall average tree diversity at genus level was higher for binary stacked models (9.8–9.9) than for probability stacked models (5.6) (Table 4). The diversity based on the validation data was 8.1, in line with results from the binary stacking approach. There was a significant mean difference of 4.3 (95% CI 4.2–4.3) between binary stacked and probability stacked models for the integrated approach (paired *t*-test $t = 200.1$, $df = 13458$, $p < 0.001$). There was a significant mean difference of 4.2 (95% CI 4.1–4.3) between binary and probability stacked models for the stratified approach (paired *t*-test $t = 153.7$, $df = 13458$, $p < 0.001$).

3.4.2. Binary stacking: rural vs. urban areas

For binary stacked models, the integrated approach yielded a statistically significant higher overall estimated tree diversity at genus level [mean difference integrated vs. stratified 0.09 (95% CI 0.06–0.11), $t = 6.72$, $df = 13458$, $p < 0.001$]. However, subtracting the stratified result from the integrated result revealed a spatial differentiation (Fig. 4). The stratified approach resulted in a significantly higher diversity in the rural areas, thus a negative mean difference of -0.18 (95% CI -0.21 to -0.15) ($t = -12.5$, $df = 8359$, $p < 0.001$). The integrated approach, however, resulted in a significantly higher diversity in the urban areas, thus a positive mean difference of 0.52 (95% CI 0.48–0.57) ($t = 22.3$, $df = 5098$, $p < 0.001$).

Green pixels (Fig. 4) represent a higher diversity obtained with the integrated approach. These green pixels are often clustered within the FUAs (black outline, Fig. 4). Conversely, red pixels represent a higher diversity obtained with the stratified approach. These red pixels are observed in clusters outside the FUAs, especially in extremely rural areas such as: 'De Westhoek' in the west and 'Haspengouw' in the south-east of Flanders (Fig. 4).

4. Discussion and conclusions

4.1. Environmental covariates

Rural and urban models were driven by different environmental covariates, which confirms the first hypothesis. As expected, soil variables, such as texture class and drainage class, were of high importance to explain the distribution of native trees in rural areas. Texture class was an important covariate for *Corylus*, for example, because this genus requires richer loamy soils (Özenc, 2001). *Salix* and *Populus* can tolerate wet soils (Zalesny & Bauer, 2007) and as a result drainage class was an important environmental covariate in their SDMs. Earlier studies demonstrated that including soil factors in plant SDMs results in improved predictions (Buri et al., 2017). For urban areas we expected that the vegetation would be determined by anthropogenic influences. The urban heterogeneity, which is better described in the Biological Valuation Map (BVM), was the most important covariate in the urban SDMs (Table 1). In the BVM seven urban/built up types are included (ua, ud, un, ur, uv, uc and ui), while the other land cover map

Table 1

Summary of the species distribution models for each genus. Reporting the number of grid cells occupied by an observation (presences), the average area under the curve (AUC) as a measure to evaluate the models, the standard deviation of the AUC (SD), the strongest predictor (SP) and the percent of contribution (PC) of this strongest predictor to the MaxEnt model. (BVM = Biological Valuation Map).

Genus	presences	Rural stratum				Urban stratum				Integrated model			
		AUC	SD	SP	PC	AUC	SD	SP	PC	AUC	SD	SP	PC
<i>Aesculus</i>	1162	0.63	0.03	BVM	54.3	0.62	0.04	BVM	61.2	0.64	0.03	BVM	55.1
<i>Alnus</i>	6918	0.55	0.01	BVM	38.0	0.54	0.02	BVM	40.7	0.54	0.01	BVM	39.9
<i>Betula</i>	8888	0.60	0.01	BVM	40.9	0.58	0.02	BVM	45.6	0.58	0.01	BVM	47.7
<i>Carpinus</i>	3029	0.64	0.02	texture class	42	0.63	0.02	BVM	29.2	0.63	0.02	texture class	41.3
<i>Corylus</i>	5490	0.60	0.02	texture class	45.8	0.59	0.02	BVM	34.5	0.59	0.01	texture class	47.1
<i>Fagus</i>	2710	0.64	0.02	drainage class	38.1	0.64	0.02	BVM	32.7	0.64	0.02	drainage class	37.2
<i>Fraxinus</i>	6635	0.58	0.01	texture class	67.6	0.55	0.02	texture class	42.6	0.57	0.01	texture class	71.2
<i>Juglans</i>	1833	0.61	0.03	texture class	44.9	0.59	0.03	BVM	40.3	0.61	0.02	texture class	46.5
<i>Platanus</i>	50	0.63	0.34	BVM	47.5	0.90	0.06	BVM	81.7	0.81	0.10	BVM	85.9
<i>Populus</i>	5380	0.57	0.02	drainage class	55.9	0.56	0.02	BVM	41.8	0.56	0.01	drainage class	47.1
<i>Quercus</i>	8182	0.57	0.01	BVM	36.2	0.55	0.02	texture class	38.4	0.55	0.01	BVM	38.7
<i>Salix</i>	8349	0.53	0.01	drainage class	65.0	0.52	0.02	BVM	39.9	0.52	0.01	drainage class	46.4
<i>Tilia</i>	1171	0.61	0.04	BVM	42.6	0.63	0.04	BVM	54.3	0.64	0.03	BVM	43.8

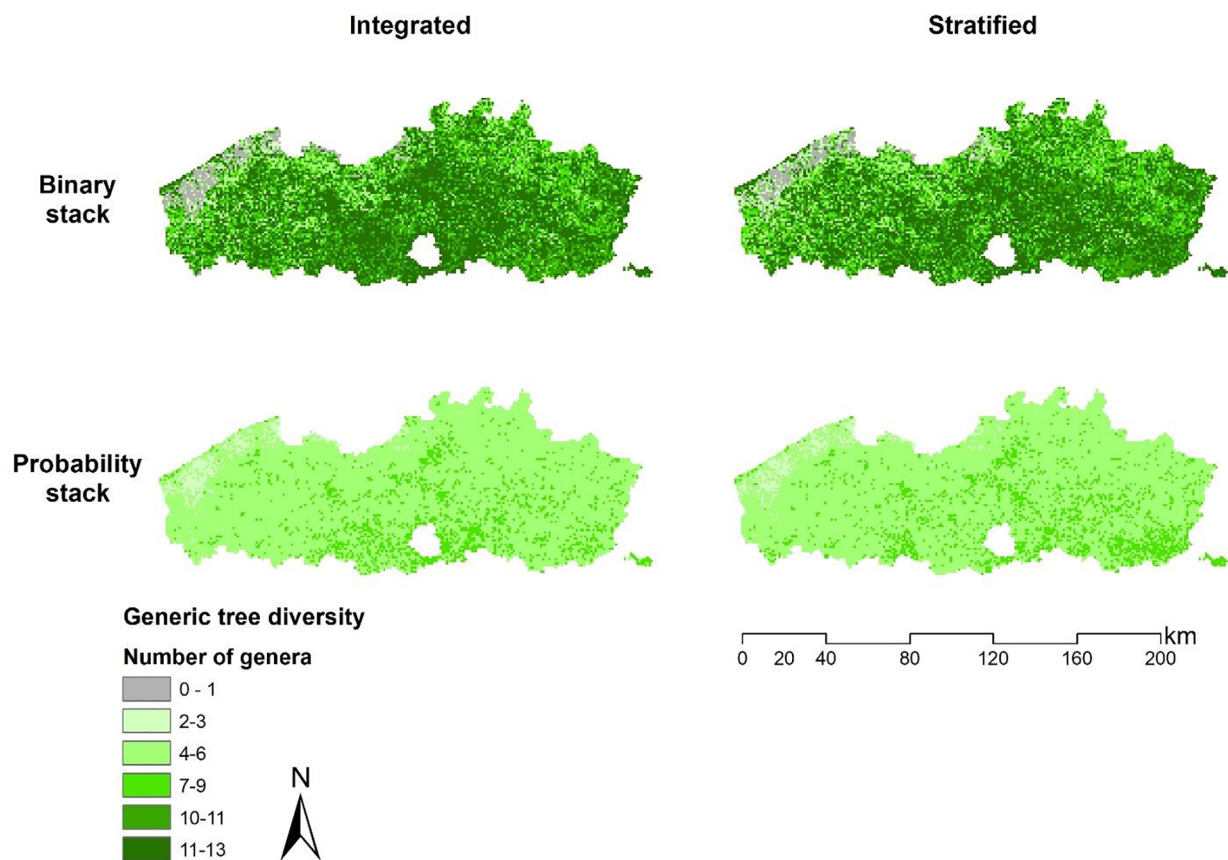


Fig. 3. Tree diversity at genus level determined by binary (upper) and probability (lower) stacking of the MaxEnt models developed in an integrated (left) and stratified (right) modelling approach. The cell size is 1 km × 1 km.

Table 2

Validation results: true positive rate (TPR) derived from the confusion matrix.

Model	Approach	TPR		
		Overall	Urban	Rural
Binary stacked	Integrated	0.90	0.94	0.89
	Stratified	0.90	0.95	0.88
Probability stacked	Integrated	0.53	0.54	0.53
	Stratified	0.52	0.53	0.53

Table 3

Validation results: percentage of false negatives (%) derived from the confusion matrix.

Model	Approach	FN (%)		
		Overall	Urban	Rural
Binary stacked	Integrated	6.1	4.3	7.0
	Stratified	6.0	3.3	7.3
Probability stacked	Integrated	29.3	30.8	28.6
	Stratified	29.9	31.5	29.2

Table 4

Average modelled tree diversity at genus level based on binary and probability stacked models, for integrated and stratified approaches and for urban and rural areas.

Model	Approach	Tree diversity (95% CI)		
		Overall	Urban	Rural
Binary stacked	Integrated	9.9 (9.8–9.9)	10.1 (10.0–10.1)	9.8 (9.7–9.8)
	Stratified	9.8 (9.7–9.8)	9.5 (9.4–9.6)	10.0 (9.9–10.0)
Probability stacked	Integrated	5.6 (5.6–5.6)	5.7 (5.7–5.8)	5.6 (5.5–5.6)
	Stratified	5.6 (5.6–5.6)	5.5 (5.5–5.6)	5.6 (5.6–5.6)
Validation data		8.1 (7.6–8.7)	8.6 (7.8–9.5)	7.9 (7.3–8.6)

(ECOPLAN) contains only three urban land cover types (9101, 9201, 9202) (see [Appendix 1](#)). It has been emphasized in the past that including environmental covariates that account for the diverse functions of urban areas is important to understand urban plant species patterns ([Godefroid & Koedam, 2007](#)). Future developments of species distribution models in urban areas need to include covariates that address the variety of anthropogenic influence.

4.2. Stacking methods

At a fine spatial resolution, as in the work of [D'Amen et al. \(2015\)](#), binary stacking tends to overestimate species diversity in natural environments, because dispersal limitations and biotic interactions are not taken into account. In this study, however, we worked at a spatial resolution of 1 km × 1 km and biotic interactions are less important at this relatively coarse resolution ([Thuiller, Pollock, Gueguen, & Münkemüller, 2015](#)). The probability stacking method should prevent from overestimating tree diversity at genus level. Nevertheless, the low true positive rate ([Table 2](#)) and the high percentage of false negatives ([Table 3](#)) showed that the probability stacking method underestimated tree diversity in Flanders. Additionally, in urbanized areas, human decision-making and management most likely override natural species selection and therefore biotic interactions are less likely to drive species composition. As a result, binary stacking seems to be the preferred method for biodiversity modelling at 1 km × 1 km resolution in both

urban areas and rural areas. Nevertheless, the scale-dependent applicability of a macro-ecological constraint needs further research as there is, to our knowledge, no literature on this topic.

4.3. Comparison of model outcomes

Binary stacking resulted in a significantly higher diversity at genus level compared to probability stacking ([Table 4](#)). This difference is not an overestimation of binary stacking, but due to an underestimation of probability stacking. Using the binary stacking method in combination with the stratified approach, a higher expected generic tree diversity was observed in the rural areas ([Table 4](#) and [Fig. 4](#)). Rural areas are therefore more prone to overestimation and would probably benefit from the application of macro-ecological constraints, compared to urban areas. Nevertheless, macro-ecological constraints seem to be more relevant in areas governed by more natural processes ([D'Amen et al., 2015](#)), and in far less urbanized areas than the rural areas in Flanders.

To conclude, we find that binary stacking is most suitable for both urban and rural areas in Flanders. Stratification of the study area did not improve model quality considerably, but confirmed that different environmental covariates contributed to the models of urban and rural areas. Probability stacking is to be considered in natural areas, but does not perform well in urbanized areas, especially at the spatial resolution of 1 km × 1 km.

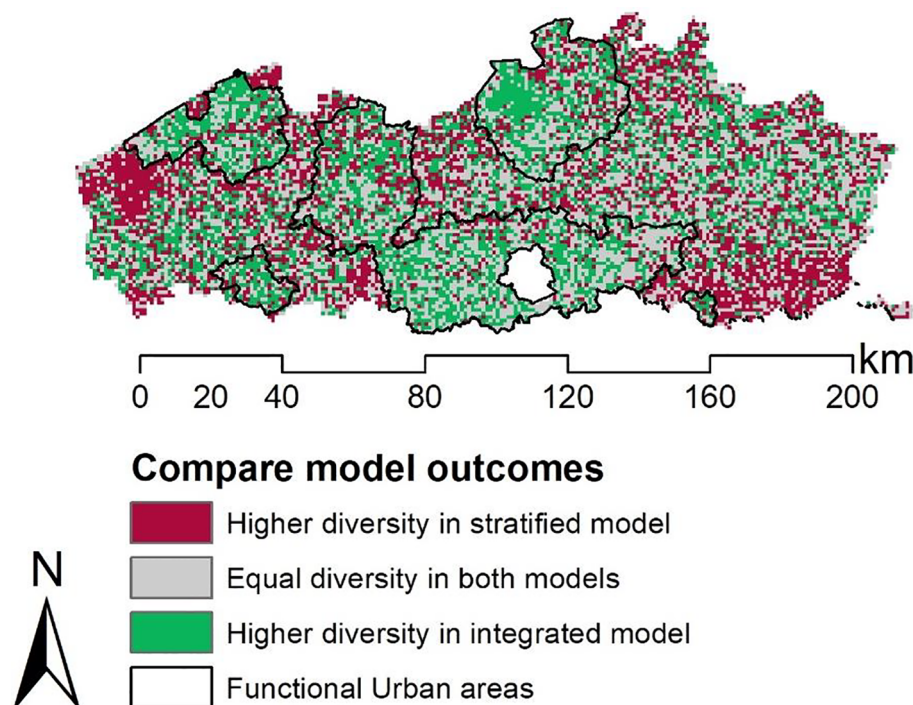


Fig. 4. The difference in the binary stacking results from the integrated and stratified approach. Cell size is 1 km × 1 km.

4.4. Limitations

All Species Distribution Models (SDMs) had relatively low Area Under the Curve values (average AUC: 0.60 ± 0.01), but all performed better than random distributions (Table 1). By stacking SDMs, errors in individual species models accumulate and degrade predictions of species diversity (D'Amen et al., 2015; Pottier et al., 2013). The importance of the BVM as an environmental covariate emphasizes the relevance of including urban habitat heterogeneity in SDMs. Unfortunately, at a moderate resolution of 1×1 km relevant intra-urban variation of the tree canopy (Weinberger et al., 2016) cannot be observed.

4.5. Applications

The models resulting from this study can be expanded by stacking more binary SDMs, by producing species-level models or by producing models of other plant groups. Spatially-explicit biodiversity data are vital for emerging environmental health studies (McInnes et al., 2017), for example to study relationships between residential and dynamic exposure to biodiversity in green spaces and human health outcomes (Cox et al., 2017; Shanahan et al., 2016). Hjort et al. (2016) present a concept to calculate individual long-term or life time exposure to pollen with geographic information systems. Landscape and urban planners could also use tree diversity maps to identify areas with low diversity and optimize the delivery of ecosystem services or decrease potential social inequalities in access to biodiverse green space by increasing biodiversity in focus areas (Wolch, Byrne, & Newell, 2014). Finally, when subsets of models for allergenic species are used, diversity maps

could be interpreted as allergy risk maps and inform pollen allergy patients about pollen allergy risks (McInnes et al., 2017).

CRediT authorship contribution statement

Michiel Stas: Methodology, Software, Validation, Formal analysis, Investigation, Writing - original draft, Visualization. **Raf Aerts:** Conceptualization, Formal analysis, Writing - review & editing, Visualization. **Marijke Hendrickx:** Writing - review & editing, Funding acquisition. **Nicolas Dendoncker:** Writing - review & editing, Funding acquisition. **Sebastien Dujardin:** Writing - review & editing. **Catherine Linard:** Writing - review & editing, Funding acquisition. **Tim Nawrot:** Writing - review & editing, Funding acquisition. **An Van Nieuwenhuysse:** Writing - review & editing, Funding acquisition. **Jean-Marie Aerts:** Writing - review & editing, Supervision, Funding acquisition. **Jos Van Orshoven:** Writing - review & editing, Supervision, Funding acquisition. **Ben Somers:** Conceptualization, Writing - review & editing, Supervision, Project administration, Funding acquisition.

Acknowledgments

This study is a contribution to the RespirIT project, which has been supported by a grant from the Belgian Science Policy Office BELSPO (grant nr. BR/154/A1/RespirIT).

The authors wish to thank Sander Heylen and Thomas Van Hecke for their contribution to the research and the editor and anonymous reviewers for their comments and constructive feedback.

Appendix

See Tables A1 and A2

Table A1

Ecoplan land cover classification (in Dutch). Retrieved from: <https://www.uantwerpen.be/nl/onderzoeksgroep/ecoplan/ecoplan-tools/ecoplan-geoloket/>.

Complex	Code	Dutch name
water	10101	Stilstaand water
	10201	Getijde mesohaline
	10202	Getijde Oligohalien
	10203	Getijde zoet
	10204	Zoet
	10301	Zee
	Bush land	1101
1201		Struweel
1301		Struiken boomgaard
1302		Laagstam
1303		Hoogstam
1401		Ander hooggroen
1402		Ander laaggroen

(continued on next page)

Table A1 (continued)

Complex	Code	Dutch name	
Forest complexes	2101	Berk	
	2102	Beuk	
	2103	Beuk – naaldhout	
	2104	Eik	
	2105	Eik – naaldhout	
	2106	Populier	
	2107	Populier – naaldhout	
	2108	Ander loofhout	
	2109	Ander loofhout – naaldhout	
	2201	lorck	
	2202	Lork – loofhout	
	2203	Fijnspar	
	2204	Fijnspar – loofhout	
	2205	Zwarte den	
	2206	Zwarte den – loofhout	
	2207	Grove den	
	2208	Grove den – loofhout	
	2209	Ander naaldhout	
	2210	Ander naaldhout – loofhout	
	Grasslands	3101	Voedselarm grassland
3102		Voedselrijk grassland	
Heath lands	3201	Voedselrijk grasland	
	4101	Droge heide	
Bare soils	4201	Vochtige heide	
	5101	Kale bodem	
Agricultural land	5201	Duinen	
	5301	Strand	
	5401	Niet verharde wegen	
	6101	Aardappel	
	6102	Mais	
	6103	Graan	
	6104	Zaden	
	6105	Peulvruchten	
	6106	Suikerbiet	
	6107	Groenten	
	6108	Kruiden	
	6109	Fruit	
	6110	Vlas en hennep	
	6111	Voedergewassen	
	6112	Andere akker	
	6201	Eénjarige sierplanten	
	6202	Meerjarige sierplanten	
	6203	Kerstbomen	
	Wet vegetation types	7101	Moeras
		7201	Rietland
7301		Alluvial bos	
8101		Slikken	
Built up area	8201	Schorren	
	9101	Gebouwen	
	9201	Verhard	
	9202	Verhard andere	

Table A2

Biological valuation map classification of habitat types (in Dutch). Retrieved from: <https://www.geopunt.be/catalogus/datasetfolder/bf31d5c7-e97d-4f71-a453-5584371e7559>.

Complex	Code(s)	Dutch name
Stagnant water	ad	Bezinkingsbekken
	ae, aer, aev	Eutroof
	ap, apo, app	Diep of zeer diep water
	ao, aoo, aom	Oligotroof tot mesotroof water
	ah	Brak of zilt water
Swamps	ms	Zuur laagveen
	mm	Galigaanvegetatie
	mk	Alkalisch laagveen
	mc	Grote zeggenvegetatie
	mz	Brak tot zilt moeras
	mr	Rietland en andere Phragmiton vegetaties
	md	Drijfzoom en/of drijfzilt

(continued on next page)

Table A2 (continued)

Complex	Code(s)	Dutch name	
Grasslands	ha	Struisgrasvegetatie	
	hc	Dotterbloemgrasland	
	hk	Kalkgrasland	
	hm, hmm, hme	Vochtig schraalgrasland	
	hmo	Vochtig heischraalgrasland	
	hn	Droog heischraalgrasland	
	hu	Mesofiel hooiland	
	hj	Vochtig grasland gedomineerd door russen	
	hp ×, hpr ×	Soortenrijk premanent cultuurgrasland	
	hpr(×) + da, hp(×) + da, h + da	Soortenrijk premanent cultuurgrasland met zilte elementen	
	hp	Soortenarm permanent cultuurgrasland	
	hx	Zeer soortenarm, vaak tijdelijk grasland	
	hf, hfc, hft	Moerasspirearuigte	
	hr	verruigd grasland	
	hz	grasland op zware metalen vergiftigd bodems	
	hpr	weidelandcomplex met veel sloten of microreliëf	
	High fenn	t	hoogveen
	Heath lands	cg	Droge struikheivegetatie
		cv	Droge heide met bosbes
ce, ces		Vochtige tot natte dopheivegetatie	
cm		Gedegradeerde heide met dominantie van pijpenstrootje	
cp		Gedegradeerde heide met dominantie van adelaarsvaren	
cd		Gedegradeerde heide met dominantie van bochtige smele	
Dunes and tidal flats	ds	Slikken	
	da	Schorre	
	dd	Stuifduinen aan de kust	
	dl	Strand	
	dz	Zandbank	
	Bush land	sd(b)	Duinstruweel
sp		Doornstruweel	
sk		Struweel op kalkrijke bodem	
sg, sgu, sgb		Brem- en gaspeldoornstruweel	
sz		Opslag van allerlei aard	
sf		Vochtig wilgenstruweel op voedselrijke bodem	
so		Vochtig wilgenstruweel op venige of zure grond	
sm		Gagelstruweel	
se		Kapvlakte	
Beech forests		fe	Beukenbos met wilde hyacint
	fa	Beukenbos met voorjaarsflora, zonder wilde hyacint	
	fm	Beukenbos met parelgras en lievevrouwebedstro	
	fk	Beukenbos op mergel	
	fl	Beukenbos met witte veldbies	
	fs	Zuur beukenbos	
Oak forests	qe	Eiken-haagbeukenbos met wilde hyacint	
	qa	Eiken-haagbeukenbos	
	qk	Eiken-haagbeukenbos op mergel	
	ql	Eikenbos met witte veldbies	
	qs	Zuur eikenbos	
	qb	Eikenberkenbos	
Wet forests	vc	Bronbos	
	va	Alluviaal elzen-essenbos	
	vf	Elzen-eikenbos	
	vn	Nitrofiel alluviaal elzenbos	
	vm	Elzenbroek	
	vo	Oligotroof elzenbroek met veenmossen	
	vt	Berkenbroek	
Ruderal forests	ru, rud	ruderaal olmenbos	
Coniferous forests	pi, ppl, pa, ppa	Naaldhoutbestand zonder ondergroei	
	pmh, pms, pmb, ppmh, ppms, ppmb	Naaldhoutbestand met ondergroei	
Poplar forests	lhi, lhb, lsi, lsb, lsh	Populiersbestand	
Other deciduous forests	n	Loofhout aanplant (exclusief populier)	
Agricultural fields	bk, bl, bs, bu	Akker	
Urban and built up areas	ua, ud, un, ur	Bebouwing	
	uv, uc	Recreatiegebied	
Small landscape elements	ui	Industrie	
	kj	Hoogstamboomgaard	
	kb	Bomenrij	
	kh	Houtkant	
	khw	Houtwal	
	k	lijnvormige begroeiing van perceelsranden, sloten en bermen	
	kk	Doline, ingang ondergrondse mergelgroeve	
	km	Muurvegetatie	
	kn	Veedrinkpoel	
	kt	Talud	
	kw	Holle weg	

(continued on next page)

Table A2 (continued)

Complex	Code(s)	Dutch name
Other mapped elements	ko	Stort
	kr	Groeve
	kf	Voormalig militair fort
	kg	Terril
	kz	Opgehoogd terrein
	ki	Vliegveld
	kg	Kwekerij of Serre
	ka	Eendenkooi
	kr	Rots
	kd	Dijk
	ks	Verlaten spoorweg
	kl	Laagstamboomgaard
	kp	Park
	kpa	Arboretum
	kpk	Kasteelpark

References

- Aronson, M. F., Lepczyk, C. A., Evans, K. L., Goddard, M. A., Lerman, S. B., MacIvor, J. S., ... Vargo, T. (2017). Biodiversity in the city: Key challenges for urban green space management. *Frontiers in Ecology and the Environment*, 15, 189–196. <https://doi.org/10.1002/fee.1480>.
- Bourne, K. S., & Conway, T. M. (2017). The influence of land use type and municipal context on urban tree species diversity. *Urban Ecosystems*, 17(1), 329–348. <https://doi.org/10.1007/s11252-013-0317-0>.
- Buri, A., Cianfrani, C., Pinto-Figueroa, E., Yashiro, E., Spangenberg, J. E., Adatte, T., ... Pradervand, J.-N. (2017). Soil factors improve predictions of plant species distribution in a mountain environment. *Progress in Physical Geography*, 41, 703–722. <https://doi.org/10.1177/0309133317738162>.
- Calabrese, J. M., Certain, G., Kraan, C., & Dormann, C. F. (2014). Stacking species distribution models and adjusting bias by linking them to macroecological models. *Global Ecology and Biogeography*, 23, 99–112. <https://doi.org/10.1111/geb.12102>.
- Cao, Y., DeWalt, R. E., Robinson, J. L., Tweddle, T., Hinz, L., & Pessino, M. (2013). Using Maxent to model the historic distributions of stonefly species in Illinois streams: The effects of regularization and threshold selections. *Ecological Modelling*, 259, 30–39. <https://doi.org/10.1016/j.ecolmodel.2013.03.012>.
- Cardinale, B. J., Duffy, J. E., Gonzalez, A., Hooper, D. U., Perrings, C., Venail, P., ... Naeem, S. (2012). *Biodiversity loss and its impact on humanity*. <https://doi.org/10.1038/nature1148>.
- Cornelis, J., Hermyn, M., Roelandt, B., De Keersmaeker, L., Vandekerckhove Kris, 2009. Bospplantengemeenschappen in Vlaanderen, eEen typologie van bossen gebaseerd op de kruidlaag. INBO.M.2009.5. Agentschap voor Natuur en Bos en Instituut voor Natuur- en Bosonderzoek, Brussel.
- Cox, D., Shanahan, D., Hudson, H., Fuller, R., Anderson, K., Hancock, S., & Gaston, K. (2017). Doses of nearby nature simultaneously associated with multiple health benefits. *International Journal of Environmental Research and Public Health*, 14, 172. <https://doi.org/10.3390/ijerph14020172>.
- Cox, D. T. C., Bennie, J., Casalegno, S., Hudson, H. L., Anderson, K., & Gaston, K. J. (2019). Skewed contributions of individual trees to indirect nature experiences. *Landscape and Urban Planning*, 185, 28–34. <https://doi.org/10.1016/j.landurbplan.2019.01.008>.
- D'Amen, M., Dubuis, A., Fernandes, R. F., Pottier, J., Pellissier, L., & Guisan, A. (2015). Using species richness and functional traits predictions to constrain assemblage predictions from stacked species distribution models. *Journal of Biogeography*, 42, 1255–1266. <https://doi.org/10.1111/jbi.12485>.
- De Keersmaeker, L., Onkelinx, T., De Vos, B., Rogiers, N., Vandekerckhove, K., Thomaes, A., ... Verheyen, K. (2015). The analysis of spatio-temporal forest changes (1775–2000) in Flanders (northern Belgium) indicates habitat-specific levels of fragmentation and area loss. *Landscape Ecology*, 30, 247–259. <https://doi.org/10.1007/s10980-014-0119-7>.
- De Marco, P., & Nóbrega, C. C. (2018). Evaluating collinearity effects on species distribution models: An approach based on virtual species simulation. *PLoS One*, 13, e0202403. <https://doi.org/10.1371/journal.pone.0202403>.
- Della Rocca, F., Bogliani, G., & Milanese, P. (2017). Patterns of distribution and landscape connectivity of the stag beetle in a human-dominated landscape. *Journal for Nature Conservation*, 19, 19–37. <https://doi.org/10.3897/natureconservation.19.12457>.
- Di Cola, V., Broennimann, O., Petitpierre, B., Breiner, F. T., D'Amen, M., Randin, C., ... Guisan, A. (2017). ecospat: An R package to support spatial analyses and modeling of species niches and distributions. *Ecography (Cop.)*, 40, 774–787. <https://doi.org/10.1111/ecog.02671>.
- Dobbs, C., Hernández, A., de la Barrera, F., Miranda, M.D., Paecke, S.R., 2018. Integrating Urban Biodiversity Mapping, Citizen Science and Technology, in: Urban Biodiversity. Routledge, pp. 236–247. <https://doi.org/10.9774/GLEAF.9781315402581.16>.
- Dondeyne, S., Vanierschot, L., Langohr, R., Ranst, E. Van, Deckers, J., 2014. The soil map of the Flemish region converted to the 3rd edition of the World Reference Base for soil resources 139.
- Donovan, R. G., Stewart, H. E., Owen, S. M., MacKenzie, A. R., & Hewitt, C. N. (2005). Development and application of an urban tree air quality score for photochemical pollution episodes using the Birmingham, United Kingdom, Area as a Case Study. *Environmental Science & Technology*, 39, 6730–6738. <https://doi.org/10.1021/ES050581Y>.
- Dyderski, M. K., Paź, S., Frelich, L. E., & Jagodziński, A. M. (2018). How much does climate change threaten European forest tree species distributions? *Glob. Chang. Biol.* 24, 1150–1163. <https://doi.org/10.1111/gcb.13925>.
- ECOPLAN, 2014. ECOPLAN Monitor [WWW Document]. URL <http://www.ecosysteemdiensten.be/cms/>.
- Elith, J., H. Graham, C., P. Anderson, R., Dudík, M., Ferrier, S., Guisan, A., J. Hijmans, R., Huettmann, F., R. Leathwick, J., Lehmann, A., Li, J., G. Lohmann, L., A. Loiselle, B., Manion, G., Moritz, C., Nakamura, M., Nakazawa, Y., McC. M. Overton, J., Townsend Peterson, A., J. Phillips, S., Richardson, K., Scachetti-Pereira, R., E. Schapire, R., Soberón, J., Williams, S., S. Wisz, M., E. Zimmermann, N., 2006. Novel methods improve prediction of species' distributions from occurrence data. *Ecography (Cop.)*. 29, 129–151. <https://doi.org/10.1111/j.2006.0906-7590.04596.x>.
- Elith, J., Phillips, S. J., Hastie, T., Dudík, M., Chee, Y. E., & Yates, C. J. (2011). A statistical explanation of MaxEnt for ecologists. *Diversity and Distributions*, 17, 43–57. <https://doi.org/10.1111/j.1472-4642.2010.00725.x>.
- ESRI, 2017. ESRI, Redlands, US. <http://www.esri.com/software/arcgis>. Last accessed 23/09/2017.
- Ficetola, G. F., Thuiller, W., & Padoa-Schioppa, E. (2009). From introduction to the establishment of alien species: Bioclimatic differences between presence and re-production localities in the slider turtle. *Diversity and Distributions*, 15, 108–116. <https://doi.org/10.1111/j.1472-4642.2008.00516.x>.
- Gao, C., Shi, N.-N., Liu, Y.-X., Peay, K. G., Zheng, Y., Ding, Q., ... Guo, L.-D. (2013). Host plant genus-level diversity is the best predictor of ectomycorrhizal fungal diversity in a Chinese subtropical forest. *Molecular Ecology*, 22, 3403–3414. <https://doi.org/10.1111/mec.12297>.
- Gavish, Y., Marsh, C. J., Kuemmerlen, M., Stoll, S., Haase, P., & Kunin, W. E. (2017). Accounting for biotic interactions through alpha-diversity constraints in stacked species distribution models. *Methods in Ecology and Evolution*, 8, 1092–1102. <https://doi.org/10.1111/2041-210X.12731>.
- Godefroid, S., & Koedam, N. (2007). Urban plant species patterns are highly driven by density and function of built-up areas. *Landscape Ecology*, 22, 1227–1239. <https://doi.org/10.1007/s10980-007-9102-x>.
- Goff, F. G., Dawson, G. A., & Rochow, J. J. (1982). Site examination for threatened and endangered plant species. *Environmental Management*, 6, 307–316. <https://doi.org/10.1007/BF01875062>.
- Guisan, A., & Rahbek, C. (2011). SESAM – A new framework integrating macroecological and species distribution models for predicting spatio-temporal patterns of species assemblages. *Journal of Biogeography*, 38, 1433–1444. <https://doi.org/10.1111/j.1365-2699.2011.02550.x>.
- Hamm, C. A. (2013). Estimating abundance of the federally endangered Mitchell's satyr butterfly using hierarchical distance sampling. *Insect Conservation and Diversity*, 6, 619–626. <https://doi.org/10.1111/icad.12017>.
- Hjort, J., Hugg, T. T., Antikainen, H., Rusanen, J., Sofiev, M., Kukkonen, J., ... Jaakkola, J. J. K. (2016). Fine-scale exposure to allergenic pollen in the urban environment: Evaluation of land use regression approach. *Environmental Health Perspectives*, 124, 619–626. <https://doi.org/10.1289/ehp.1509761>.
- Hoover, J. D., Kumar, S., James, S. A., Liesz, S. J., & Laituri, M. (2017). Modeling hotspots of plant diversity in New Guinea. *Tropical Ecology*, 58, 623–640.
- Hope, D., Gries, C., Zhu, W., Fagan, W. F., Redman, C. L., Grimm, N. B., ... Kinzig, A. (2003). *Socioeconomics drive urban plant diversity*. PNAS.
- Kemp, J. E., & Ellis, A. G. (2017). Significant local-scale plant-insect species richness relationship independent of abiotic effects in the temperate cape floristic region biodiversity hotspot. *PLoS ONE*, 12. <https://doi.org/10.1371/journal.pone.0168033>.
- Khalili, A., van den Besselaar, P., & de Graaf, K. A. (2018). *Using linked open geo boundaries for adaptive delineation of functional urban areas*. Cham: Springer327–341.
- Konarska, J., Uddling, J., Holmer, B., Lutz, M., Lindberg, F., Pleijel, H., & Thorsson, S.

- (2016). Transpiration of urban trees and its cooling effect in a high latitude city. *International Journal of Biometeorology*, 60, 159–172. <https://doi.org/10.1007/s00484-015-1014-x>.
- Lee, H., Mayer, H., & Chen, L. (2016). Contribution of trees and grasslands to the mitigation of human heat stress in a residential district of Freiburg, Southwest Germany. *Landscape and Urban Planning*, 148, 37–50. <https://doi.org/10.1016/j.landurbplan.2015.12.004>.
- Lepczyk, C. A., Aronson, M. F. J., Evans, K. L., Goddard, M. A., Lerman, S. B., & MacIvor, J. S. (2017). Biodiversity in the city: Fundamental questions for understanding the ecology of urban green spaces for biodiversity conservation. *BioScience*, 67, 799–807. <https://doi.org/10.1093/biosci/bix079>.
- McCune, J. L. (2016). Species distribution models predict rare species occurrences despite significant effects of landscape context. *Journal of Applied Ecology*, 53, 1871–1879. <https://doi.org/10.1111/1365-2664.12702>.
- McInnes, R. N., Hemming, D., Burgess, P., Lyndsay, D., Osborne, N. J., Skjøth, C. A., ... Vardoulakis, S. (2017). Mapping allergenic pollen vegetation in UK to study environmental exposure and human health. *Science of the Total Environment*, 599–600, 483–499. <https://doi.org/10.1016/J.SCITOTENV.2017.04.136>.
- Merow, C., Smith, M. J., & Silander, J. A. (2013). A practical guide to MaxEnt for modeling species' distributions: What it does, and why inputs and settings matter. *Ecography (Cop.)*, 36, 1058–1069. <https://doi.org/10.1111/j.1600-0587.2013.07872.x>.
- Milanovich, J. R., Peterman, W. E., Barrett, K., & Hopton, M. E. (2012). Do species distribution models predict species richness in urban and natural green spaces? A case study using amphibians. *Landscape and Urban Planning*, 107, 409–418. <https://doi.org/10.1016/J.LANDURBPLAN.2012.07.010>.
- O'Brien, E. M., Whittaker, R. J., & Field, R. (1998). Climate and woody plant diversity in southern Africa: Relationships at species, genus and family levels. *Ecography (Cop.)*, 21, 495–509. <https://doi.org/10.1111/j.1600-0587.1998.tb00441.x>.
- Özenc, D. B. (2001). Methods of determining lime requirements of soils in the eastern black sea hazelnut growing region. *Acta Horticulturae*, 335–342. <https://doi.org/10.17660/ActaHortic.2001.556.50>.
- Pearson, R. G., Raxworthy, C. J., Nakamura, M., & Townsend Peterson, A. (2006). Predicting species distributions from small numbers of occurrence records: A test case using cryptic geckos in Madagascar. *Journal of Biogeography*, 34, 102–117. <https://doi.org/10.1111/j.1365-2699.2006.01594.x>.
- Peel, M. C., Finlayson, B. L., McMahon, T. A., 2007. Updated world map of the Köppen-Geiger climate classification, Hydrology and Earth System Sciences Discussions, European Geosciences Union. <https://doi.org/10.5194/hess-11-1619-2007>.
- Phillips, S. J., Anderson, R. P., & Schapire, R. E. (2006). Maximum entropy modeling of species geographic distributions. *Ecological Modelling*, 190, 231–259. <https://doi.org/10.1016/j.ecolmodel.2005.03.026>.
- Pottier, J., Dubuis, A., Pellissier, L., Maiorano, L., Rossier, L., Randin, C. F., ... Guisan, A. (2013). The accuracy of plant assemblage prediction from species distribution models varies along environmental gradients. *Global Ecology and Biogeography*, 22, 52–63. <https://doi.org/10.1111/j.1466-8238.2012.00790.x>.
- Core Team, R. (2017). *R: A language and environment for statistical computing*. Vienna, Austria: R Foundation for Statistical Computing <https://www.R-project.org/>.
- Roman, L. A., Scharenbroch, B. C., Östberg, J. P. A., Mueller, L. S., Henning, J. G., Koeser, A. K., ... Jordan, R. C. (2017). Data quality in citizen science urban tree inventories. *Urban Forestry & Urban Greening*, 22, 124–135. <https://doi.org/10.1016/J.UFUG.2017.02.001>.
- Salmond, J. A., Tadaki, M., Vardoulakis, S., Arbutnot, K., Coutts, A., Demuzere, M., ... Wheeler, B. W. (2016). Health and climate related ecosystem services provided by street trees in the urban environment. *Environmental Health*, 15, S36. <https://doi.org/10.1186/s12940-016-0103-6>.
- Scholz, T., Hof, A., & Schmitt, T. (2018). Cooling effects and regulating ecosystem services provided by urban trees—Novel analysis approaches using urban tree cadastre data. *Sustainability*, 10, 712. <https://doi.org/10.3390/su10030712>.
- Selmi, W., Weber, C., Rivière, E., Blond, N., Mehdi, L., & Nowak, D. (2016). Air pollution removal by trees in public green spaces in Strasbourg city, France. *Urban Forestry & Urban Greening*, 17, 192–201. <https://doi.org/10.1016/J.UFUG.2016.04.010>.
- Shanahan, D., Bush, R., Gaston, K., Lin, B., Dean, J., Barber, E., & Fuller, R. (2016). Health benefits from nature experiences depend on dose. *Scientific Reports*, 6, 28511. <https://doi.org/10.1038/srep28551>.
- Skowronek, S., Ewald, M., Isermann, M., Van De Kerchove, R., Lenoir, J., Aerts, R., ... Feilhauer, H. (2017). Mapping an invasive bryophyte species using hyperspectral remote sensing data. *Biological Invasions*, 19, 239–254. <https://doi.org/10.1007/s10530-016-1276-1>.
- Taylor, L., & Hochuli, D. F. (2017). Defining greenspace: Multiple uses across multiple disciplines. *Landscape and Urban Planning*, 158, 25–38. <https://doi.org/10.1016/J.LANDURBPLAN.2016.09.024>.
- Thomsen, P., Bühler, O., & Kristoffersen, P. (2016). Diversity of street tree populations in larger Danish municipalities. *Urban Forestry & Urban Greening*, 15, 200–210. <https://doi.org/10.1016/J.UFUG.2015.12.006>.
- Threlfall, C. G., Mata, L., Mackie, J. A., Hahs, A. K., Stork, N. E., Williams, N. S. G., & Livesley, S. J. (2017). Increasing biodiversity in urban green spaces through simple vegetation interventions. *Journal of Applied Ecology*, 54, 1874–1883. <https://doi.org/10.1111/1365-2664.12876>.
- Thuiller, W., Pollock, L. J., Gueguen, M., & Münkemüller, T. (2015). From species distributions to meta-communities. *Ecology Letters*, 18, 1321–1328. <https://doi.org/10.1111/ele.12526>.
- Trotta-Moreu, N., & Lobo, J. M. (2010). Deriving the species richness distribution of geotrupinae (Coleoptera: Scarabaeoidea) in Mexico from the overlap of individual model predictions. *Environmental Entomology*, 39, 42–49. <https://doi.org/10.1603/EN08179>.
- Van Rompaey, E., 1943. Cartes Floristiques. Bull. la Société R. Bot. Belgique / Bull. van K. Belgische Bot. Ver. 75, 48–56. <https://doi.org/10.2307/20791920>.
- Vervoort, P., 2016. A healthy urban future for Flanders? Reducing the gap in knowledge for spatial policy and outlining consequences for governance, in: 10th AESOP YA Conference. AESOP, Ghent.
- Vriens, L., De Knijf, G., De Saeger, S., Guelinckx, R., Oosterlynck, P., Van Hove, M., Paelinckx, D., 2011. De Biologische Waarderingskaart. Biotopen en hun verspreiding in Vlaanderen en het Brussels Hoofdstedelijk Gewest. In Mededelingen van Het Instituut Voor Natuur- En Bosonderzoek. INBO.M.2011.1, Brussels, p. 416.
- Van Landuyt, W., Vanhecke, L., & Brosens, D. (2011). Florabank1: A grid-based database on vascular plant distribution in the northern part of Belgium (Flanders and the Brussels Capital region). *PhytoKeys*, 12, 59–67. <https://doi.org/10.3897/phytokeys.12.2849>.
- Walter, L., & Meier, E. S. (2017). Tree species distribution in temperate forests is more influenced by soil than by climate. *Ecology and Evolution*, 7(22), 9473–9484. <https://doi.org/10.1002/ece3.3436>.
- Weinberger, K. R., Kinney, P. L., Robinson, G. S., Sheehan, D., Kheirbek, I., Matte, T. D., & Lovasi, G. S. (2016). Levels and determinants of tree pollen in New York City. *Journal of Exposure Science & Environmental Epidemiology*, 28, 119. <https://doi.org/10.1038/jes.2016.72>.
- Wolch, J. R., Byrne, J., & Newell, J. P. (2014). Urban green space, public health, and environmental justice: The challenge of making cities 'just green enough'. *Landscape and Urban Planning*, 125, 234–244. <https://doi.org/10.1016/J.LANDURBPLAN.2014.01.017>.
- Zalesny, R. S., & Bauer, E. O. (2007). Selecting and utilizing Populus and Salix for landfill covers: Implications for leachate irrigation. *International Journal of Phytoremediation*, 9, 497–511. <https://doi.org/10.1080/15226510701709689>.